

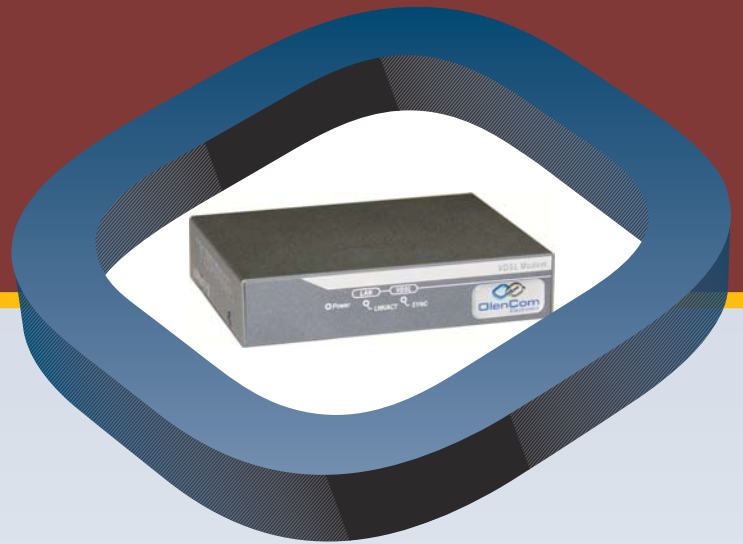
# VM-100-1B

## VDSL Modem, Ethernet Bridge

### Description

The VM-100-1B is a Ethernet/Fast Ethernet to/from VDSL conversion device with a single-port LAN interface. The VM-100-1B uses QAM-based DSL technology, and can extend the Ethernet service at a throughput of 13 Mbps to distances around 1.3 km over the standard phone line. The built-in POTS/ISDN splitter allows a local phone or ISDN device to be connected, of which the signal is sent over the same phone line as the VDSL service to the central site where another splitter should be used. The LAN interface supports both full and half-duplex modes of operations, and auto-crossover features. The internal buffer provides rate adaptation for different link rates and duplex modes between the LAN side and the VDSL side. The front panel LEDs provide clear run-time indication of traffic and system status. The VM-100-1B is the one of the most cost-effective solutions for delivering broadband services to Multi-Dwelling Units (MDU), Multi-Tenant Units (MTU) and campuses environments

### Point-to-Point Application



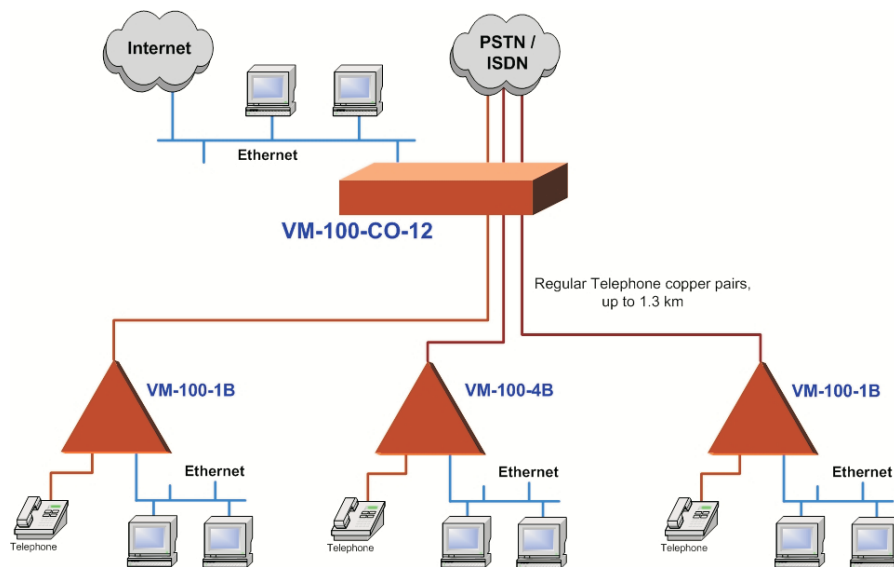
### Features

- ✓ Data conversion between 10BaseT/100BaseTX and VDSL
- ✓ Based on QAM 4 ~ 256 line coding scheme
- ✓ Supports symmetric data throughput of up to 13Mbps at around 1.3 km
- ✓ Supports asymmetric data throughput of up to 26Mbps downstream
- ✓ Supports in-band link rate changes from the remote side
- ✓ Built-in MAC address table increases throughput efficiency over the VDSL link
- ✓ Built-in 16KB/8KB Tx/Rx buffer for rate adaptation between LAN and VDSL
- ✓ Built-in POTS/ISDN splitter
- ✓ Hardware based 10/100Mbps, full/half-duplex, and crossover auto-negotiation

# VM-100-1B

## VDSL Modem, Ethernet Bridge

### Point-to-Multipoint Application



### Product Specifications

<b>VDSL Interface</b>	One VDSL interface with RJ-11 connector
<b>VDSL Distance Limitation</b>	1.5 km (5000 ft)
<b>POST/ISDN interface</b>	One POTS interface with RJ-11 connector
<b>Ethernet Standards</b>	IEEE 802.3, 802.3u, 802.3x flow control
<b>Ethernet Interface</b>	One 10/100 Base-Tx with RJ-45 connector
<b>LED indicators</b>	Power indicator VDSL: Sync.

<b>Operating Temperature</b>	0 ~ 50 C (32~122 F)
<b>Storage Temperature</b>	-25 ~70 C (-13 ~158 F)
<b>Humidity</b>	10% ~ 90% non-condensing
<b>Power Consumption</b>	10 W maximum, 5V DC with external AC to DC power adaptor
<b>Certifications</b>	FCC part 15 & Part 68, CE, VCCI
<b>Weight</b>	340 g (0.751lb)
<b>Dimension (W x D x H)</b>	4.6 x 3.6 x 1.0 in. (117.33 x 92.6 x 25.7 mm)