

CH-1024

Mini IP-DSLAM

Description

The Olencom IP-DSLAM (Digital Subscriber Line Access Multiplexer) is a compact, managed, standalone IP DSLAM with layer 2 switching capability. The wire-speed switching and full VLAN supporting, both port-based and tagged-based, are the key to make the IP-DSLAM more distinguished than any other. With the up-link 2 Ethernet port and 24 ports XDSL interfaces, including ADSL, ADSL+, ADSL2+ and SHDSL, the IP-DSLAM is suitable for MDU, MTU, Campus, and remote access application with a reach of up to 6 km.

Through proper daisy chain via the Ethernet ports, the IP-DSLAM can easily expand the capacity up to 240 XDSL ports without sacrificing the wire-speed switching capability.

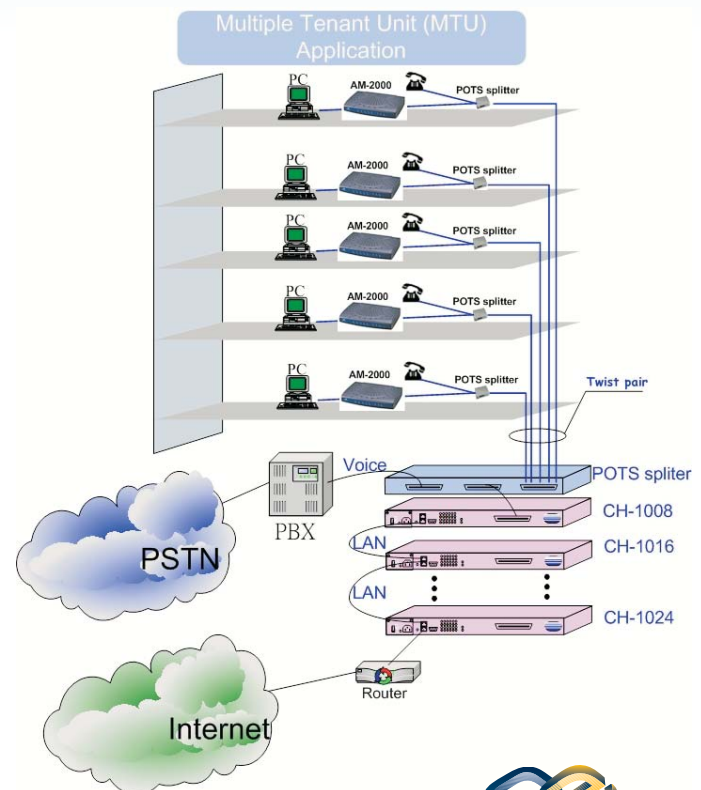
Features

- ✓ Compact 1U Intelligent IP-DSLAM with layer-2 switch capability
- ✓ Two Ethernet Uplink ports, and 24 xDSL user ports per box
- ✓ 8 Ethernet user ports are optionally available at the cost of 8 xDSL user ports
- ✓ xDSL options including ADSL, ADSL+, ADSL2+ and G.SHDSL
- ✓ Support ADSL Annex A, B, and C with proper manufacturing option
- ✓ G.SHDSL data rate up to 2312 kb/s
- ✓ 2 hot-swappable redundant power cards are available for 2U version.
- ✓ Hot Swappable Ethernet port Modules
- ✓ The Ethernet port module options are 100Base-FX, 1000Base-SX, 1000Base-LX, 10/100/1000BaseT
- ✓ Stackable to expand the DSLAM capacity up to 10 units through the Ethernet ports
- ✓ Maximum 14K MAC addresses table
- ✓ Both Port-based VLAN and Tag-based VLAN, IEEE 802.1Q, Supporting (4094 VLAN ID)
- ✓ GARP/GVRP VLAN registration support
- ✓ IEEE 802.1P 2-level priority queuing
- ✓ Auto-negotiating for Speed and Full/Half Duplex
- ✓ IEEE 802.3x Flow Control
- ✓ IEEE 802.1D, Spanning Tree Protocol
- ✓ IEEE 802.1w, Rapid Spanning Tree Protocol
- ✓ IEEE 802.1s, Multiple Spanning Tree Protocol
- ✓ RMON groups 1,2,3,9
- ✓ Port mirroring supported
- ✓ IGMP Snooping support for IP multicasting
- ✓ IEEE 802.3x flow control



- ✓ IEEE 802.3ad Link aggregation
- ✓ IEEE 802.1x port authentication
- ✓ DHCP server
- ✓ Rate limiting support on the xDSL lines, Granularity of 32kbps
- ✓ Ingress/egress rate limiting with 1Mbps granularity for the Ethernet port
- ✓ Broadcast Storm suppression
- ✓ HTTP Web-based management
- ✓ SNMP v3

Application



CH-1024

Mini IP-DSLAM

Product Specifications

Software

Switching

Max. Frame size	1568 bytes
Forwarding frame	IEEE 802.3, IEEE 802.1Q tagged frame, Ethernet II
Support 802.3/3u/3x	
Back pressure flow control for half duplex	
Flow control for full duplex (802.3x)	
Packet Forwarding Rate	6.6Mbps (64 bytes/packet)
Store and Forward	
Port Trunking	2/3/4 Port trunk Group (Max 7 Groups Supported)

Multicast

Support IGMP snooping

Bridging

Max 14K MAC addresses
MAC address filtering

Network Management

Local console
Support SNMP V3
Web-based management
Support Telnet
Provide fault, performance, configuration, and security management

MIB

RFC 1213 MIB II
RFC 1493 Bridge MIB
RFC 2674 Bridge MIB Extensions
SHDSL/ADSL line MIB

VLAN

Port-based VLAN
IEEE 802.1Q tag-based VLAN
Support GVRP for uplink
No. of IEEE802.1Q tag-based VLAN 4094 with page limitation

xDSL Interface

24 xDSL ports per box
Stackable to expand the DSLAM capacity up to 24x10 xDSL ports. Daisy chain via the Ethernet ports
With proper manufacturing option, the interfaces of the XDSL can be ADSL, ADSL+, ADSL2+, or G.SHDSL.
ADSL dmt downstream data rate up to 12 Mb/s
ADSL maximum reach exceeding 20 kft (6.1 km)
G.SHDSL data rate up to 2312 kb/s
G.SHDSL maximum reach exceeding 23 kft (7 km)
Compliance ITU G.992.1 (ADSL G.dmt), ANSI T1.413 i2 (ADSL DMT), ITU G.992.2 (ADSL G.lite), ITU G.991.2 (G.SHDSL)
Connector type RJ-21 (Telco-50) female type

Ethernet Interface

Two hot-swappable uplink Ethernet modules
Possible options are 100Base-FX, 1000Base-SX, 1000Base-LX, 10/100/1000BaseT
8 optional user 10/100BaseT Ethernet ports

Physical/ Electrical

Dimensions for 1U	44 x 432 x 290 mm (Hx W x D)
Dimensions for 2U	88 x 432 x 290 mm (Hx W x D)
Power consumption	50 Watt

AC Power module

Input Voltage	90-240 Vac, 50/60 Hz
---------------	----------------------

DC Power module

Input Voltage	-36 ~ -60Vdc
---------------	--------------

POTS Splitter

External box to the main xDSL unit
Impednce 600 ohm
Dimensions (external) 412 x 44 x 290 mm (WxHxD)
24 ports
RJ-21 (Telco-50) female connector interface

