

MG-IP Series

TDM over Packet Gateway

Description

The Olencom MG-iP encapsulates data stream from the TDM ports (E1/FE1 or T1/FT1) into IP packets. TDM Over IP enables the connection of PBXs and Telecom Switches over WANs, LANs, MANs, Satellite and Wireless Ethernet. The MG-iP transparent capabilities enable to support proprietary signaling, required for military applications and metropolitan PBX features such as call conferences, call forwarding, caller ID and SS7. Legacy system equipment investment is preserved.

The MG-iP supports transport of unframed, full structured or fractional E1/T1 service together with user Fast Ethernet data over high speed Ethernet, IP or MPLS infrastructures. The MG-iP ships with one or four E1/T1 interfaces and two 10/100 BaseT Ethernet Interfaces (one for LAN, and one for WAN). The E1/T1 interfaces have configurations that provide independent protocol, compression, packet sizing, buffering, clocking, framing, delay and jitter parameters and channel settings.

The MG-iP comply with the IETF SAToP/CESoPSN and CESoETH.

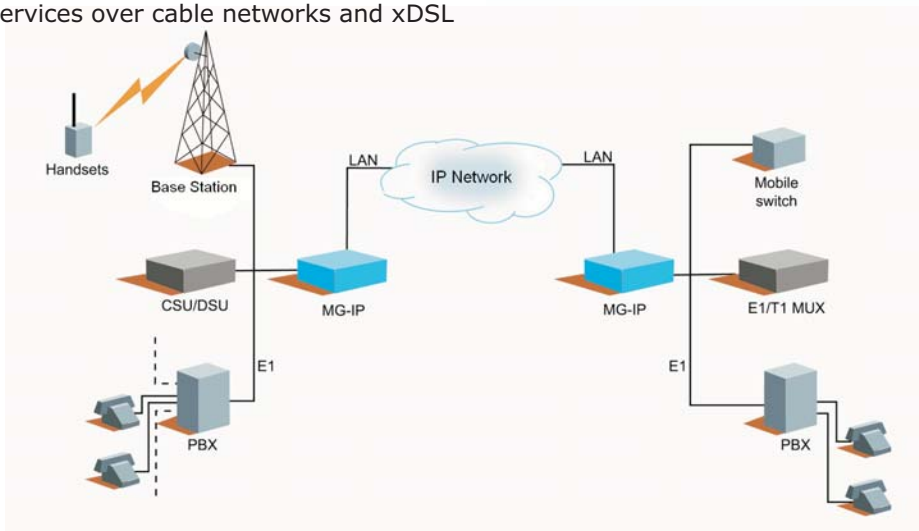
Applications

- ✓ Cellular E1/T1 backhaul
- ✓ Broadband wireless voice/data access
- ✓ Branch and campus PBX/LAN connectivity
- ✓ Voice and data services over cable networks and xDSL



Key Features

- ✓ Two 10/100BaseT Full/Half Ethernet (1 x LAN, 1 x WAN)
- ✓ One or Four E1/T1 Interfaces
- ✓ Two operations modes: Layer 3 (IP) or Layer 2(MAC) for MPLS networks
- ✓ Support VLANs and MPLS Headers
- ✓ Support Grooming and Bandwidth Control
- ✓ Support Static IP or DHCP Configuration
- ✓ Telnet configuration enabling 3 levels of users
- ✓ Support QoS via ToS, and QoS per VLAN ID
- ✓ Local and Remote Loop-Back diagnostics, BERT Test and Ping availability
- ✓ SNMP Support (MIB-I, MIB-II, DS1) with configurable traps
- ✓ Complies with industry standard IETF PWE3 CESoPSN / SAToP and CESoETH (MEF-8) standards protocols



MG-IP Series

TDM over Packet Gateway

Advanced Features

Grooming: The MG-iP supports time slots grooming technology, enabling to work in a Point To Multipoint configurations, where a group of time slots can be sent to a port on one target MG-iP and another group of time slots from the same E1 interface, can be sent to the same

Product Specification

Interfaces

LAN	Two 10/100BaseT, RJ-45, Full/Half Duplex Auto-negotiation or Configurable Speed and Duplex (802.3) Support for Bandwidth Control (1Kbps Increments)
E1	One or Four E1/FE1, T1/FT1 ports, RJ-45 120 Ohm Balanced, 75 Ohm Unb.
Framing	CRC4, CAS, Unframed, D4 (SF), ESF
Line Coding	HDB3, AMI or B8ZS
E1 Standards	ITU-T Rec. G.703, G.704, G.706, G.732, G.823
T1 Standards	AT&T TR-6241; ITU-T Rec. G.703, G.704 ANSI T1.403, G.824
E1 Receive Level	0 to -43dB; 0 to -12 dB
T1 Receive Level	0 to -36dB; 0 to -15 dB

Protocols

LAN	IP, TCP, UDP, ICMP, MAC
Qos	Type of Service (TOS) CLI configurable, QoS per Vlan ID
E1 Over IP	TDM Over IP - Circuit Emulation Services Over IP and Over Ethernet IETF SAToP/CESoPSN; MEF-8/CESoETH
Packet Size	Configurable in 1 frame increments
Jitter	1-200 msec, configurable

port on the same or a different MG-iP device.

Bandwidth Control: The MG-iP enables bandwidth control on the LAN port to support QoS capabilities along with TOS and VLAN ID awareness.

Latency	Built-in G.823/G.824 compliant synchronization
Clocking	Loopback, Internal, Recovery/Adaptive, External

Management

Configuration	Telnet (configuration, monitoring & reset), Console (DB-9 Connector)
SNMP	MIB-I, MIB-II (RFC1213), DS1 (RFC2495) with configurable traps
Diagnostics	Local Loop, Remote Loop, BERT Test, Ping
Upgrade	Nondestructive firmware upgrade via TFTP

Physical

Dimensions	165mm x 197mm x 38mm (LxWxH)
------------	------------------------------

Environmental

Temperature	
Operating	0°C to +50°C / 32-112°F
Storage	-20°C to +60°C
Humidity	0% – 95%, non condensing
Power	5VDC, 1.5A Ext. Power Supply

Safety Standards

UL, CSA, FCC Part 15 Class A, CE

